



Someone's knockin' at the door...public participation in land use planning in Alberta

Canadian Institute of Resources Law

Public Participation Conference

19 November 2010

Cindy Chiasson



About the ELC

- A charity operating since 1982
- Our mission: To ensure that laws, policies and legal processes protect the environment.
- 2 goals:
 - Good environmental law & policies
 - Effective public participation

Alberta **LAW**
FOUNDATION



"We're waiting for the city to come to us..."

Roots of the Land Use Framework initiative

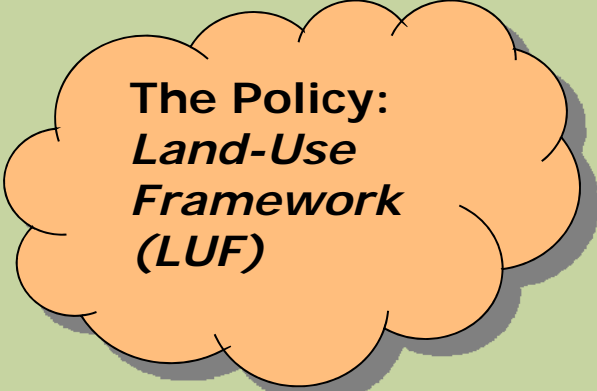
Approach to land & resource management

- multiple use
- project-by-project approval, incrementalism
- impacts of individual projects mitigated
- cumulative effects difficult to deal with
- anti-planning or laissez-faire approach to planning
- patchwork of policy and legal requirements
- “silo” based decision-making

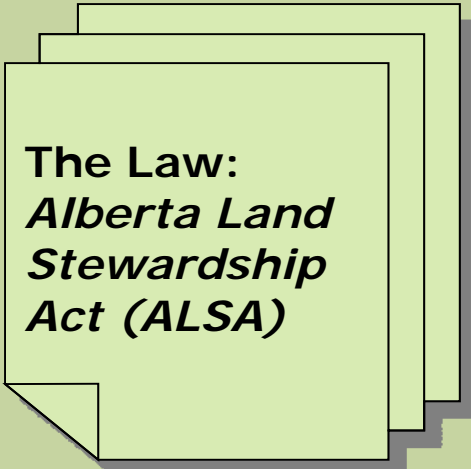
What Albertans want...

- stronger provincial leadership
- better policy integration & coordination (land, water & air)
- greater clarity re: roles & responsibilities of land use decision-makers
- improved **conflict resolution** processes
- better land conservation & stewardship
- improved land use **information sharing**
- increased **consultation** & **opportunities** for public, stakeholders & aboriginal peoples **to influence** land use policies & decisions


Key elements



The Policy:
*Land-Use
Framework
(LUF)*

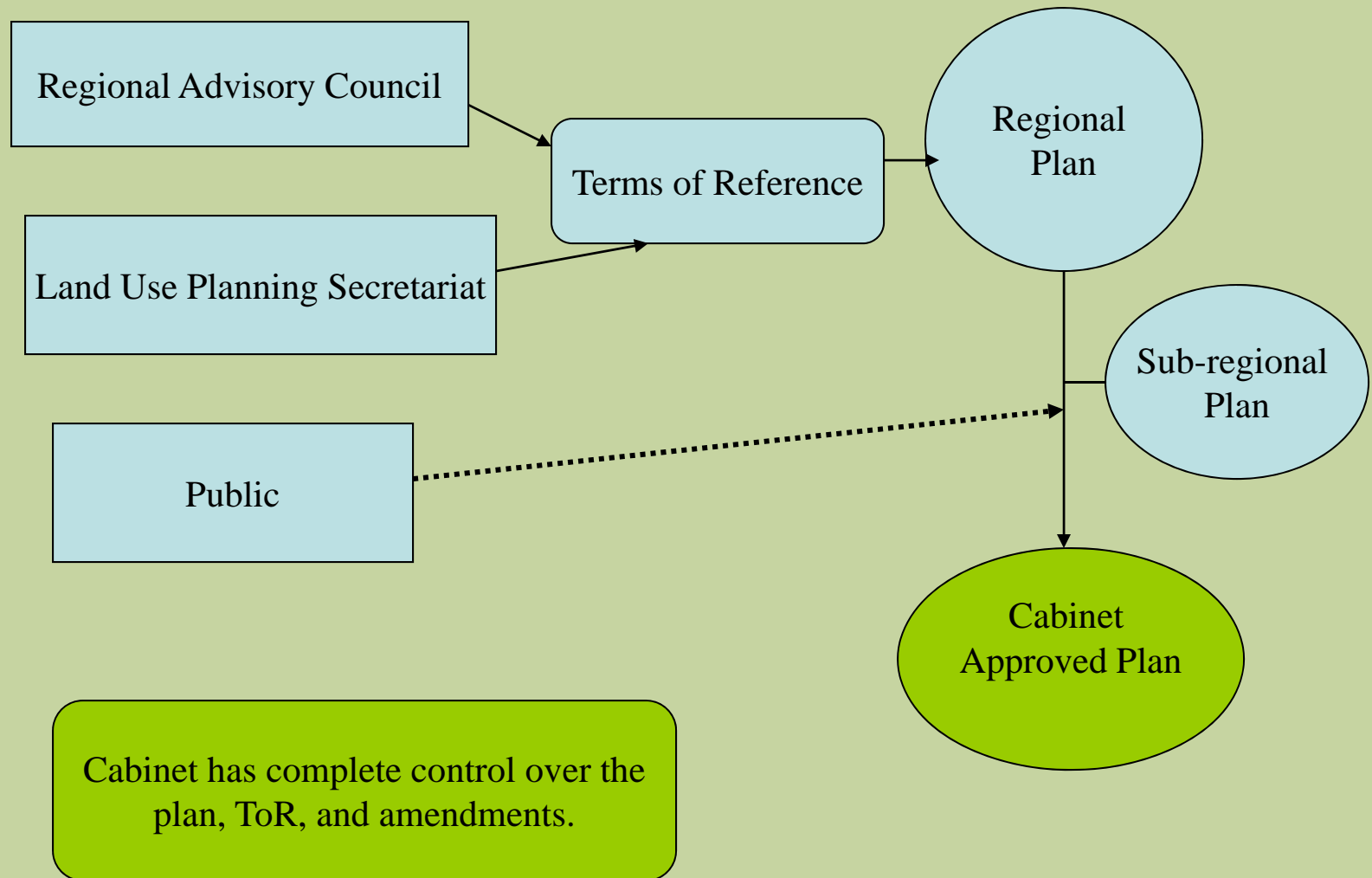


The Law:
*Alberta Land
Stewardship
Act (ALSA)*

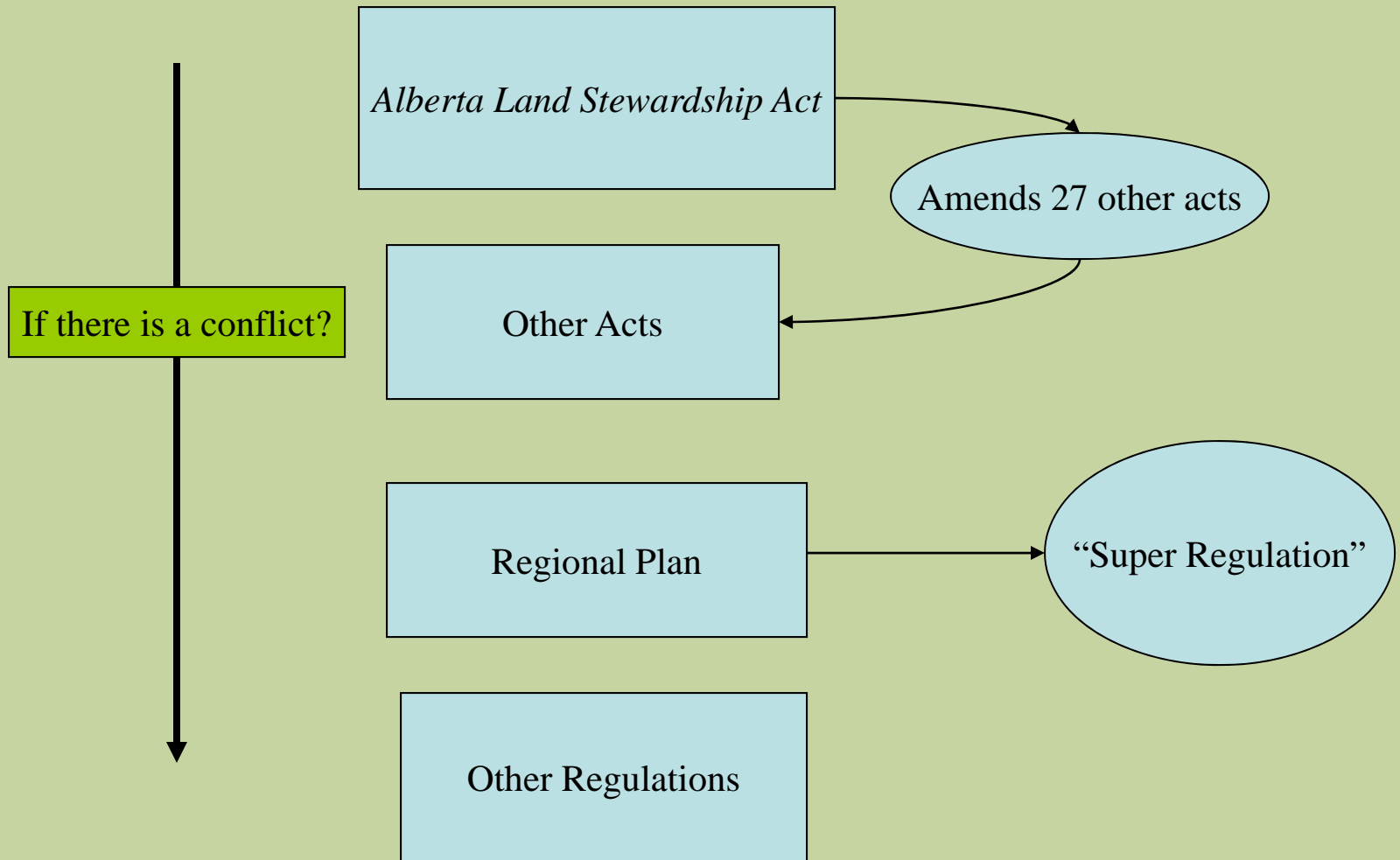


The Details:
**Regional Land Use
Plans**

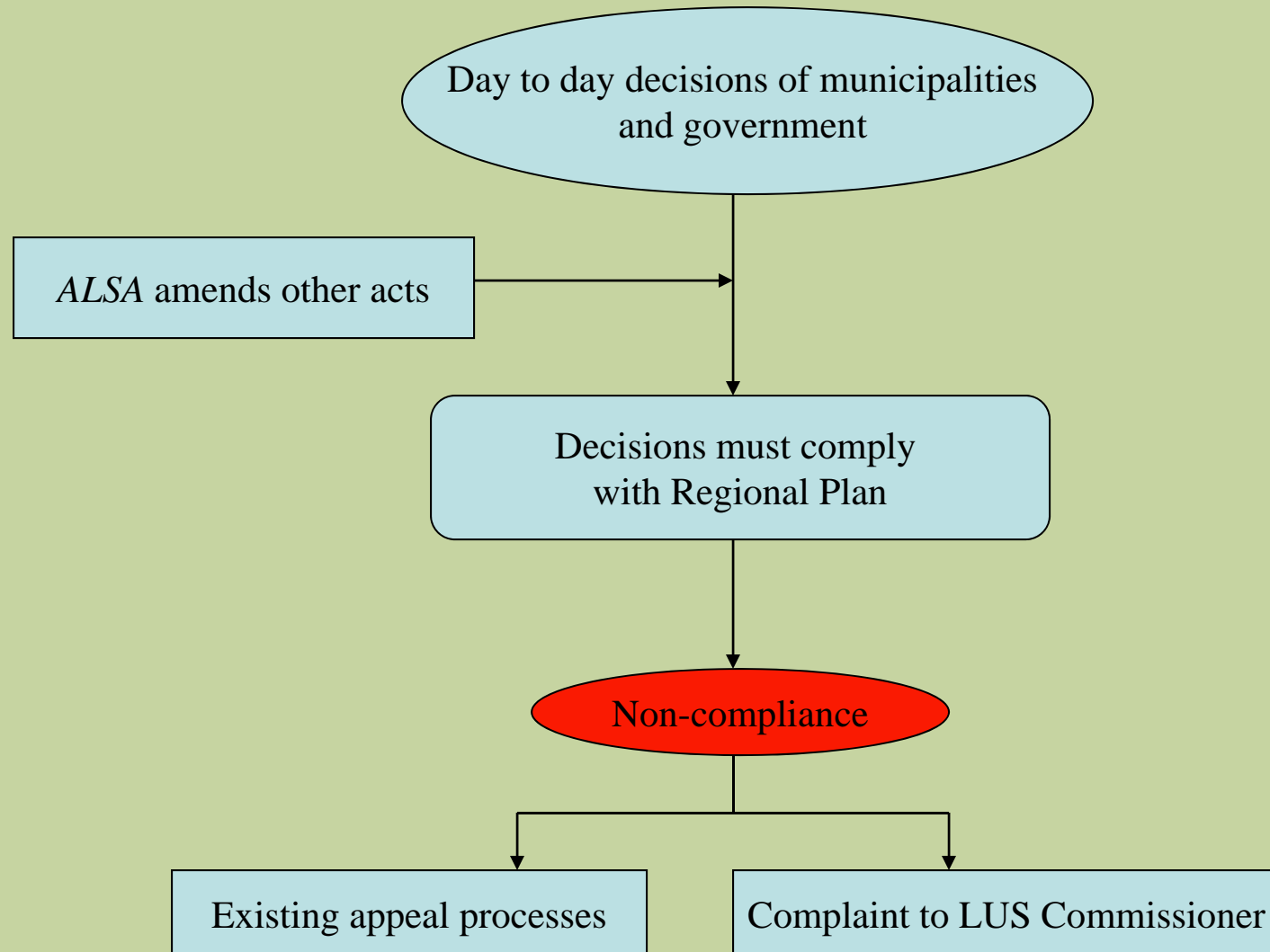
Structure – regional planning



Regulatory hierarchy



Enforcement



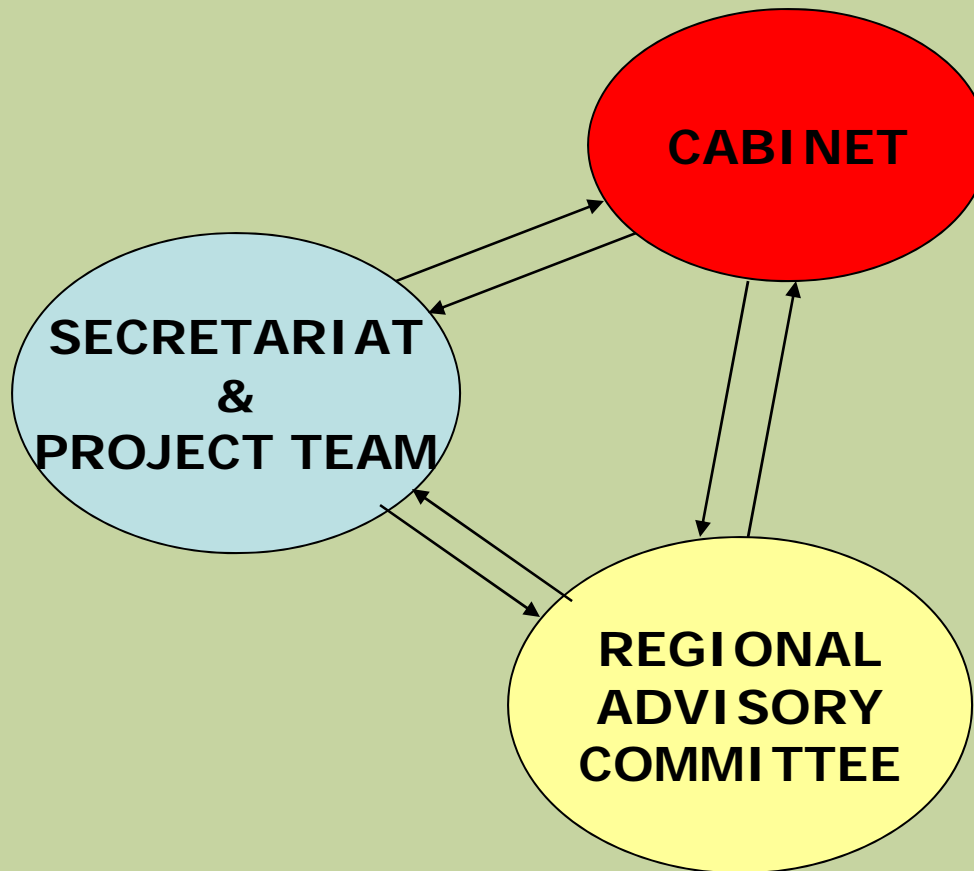
Development of regional plans

Land-use Framework Regions



- Current (done 2010):
 - Lower Athabasca
 - South Saskatchewan
- Stage 2 (done 2011):
 - North Saskatchewan
 - Lower Peace
- Stage 3 (done 2012):
 - Red Deer
 - Upper Peace
 - Upper Athabasca

Development of regional plans



3 stages of public input

- Initial info sessions
- Draft vision for plan
- Draft plan

Aboriginal consultation separate

Elements of regional plans

ALSA requirements:

- Regional vision
- One+ objectives
- All else is optional

Per terms of reference:

- Regional profile
- Policy context
- Regional vision statement
- Regional outcomes, objectives & goals
- Strategies, actions, approaches
- Monitoring & reporting

Scope of plans (so far...)

Lower Athabasca

- Primary focus: economic development (oil sands; timber)
- Land conservation – boreal forest
- Thresholds: water & air (NO_x & SO₂)
- Aboriginal traditional use

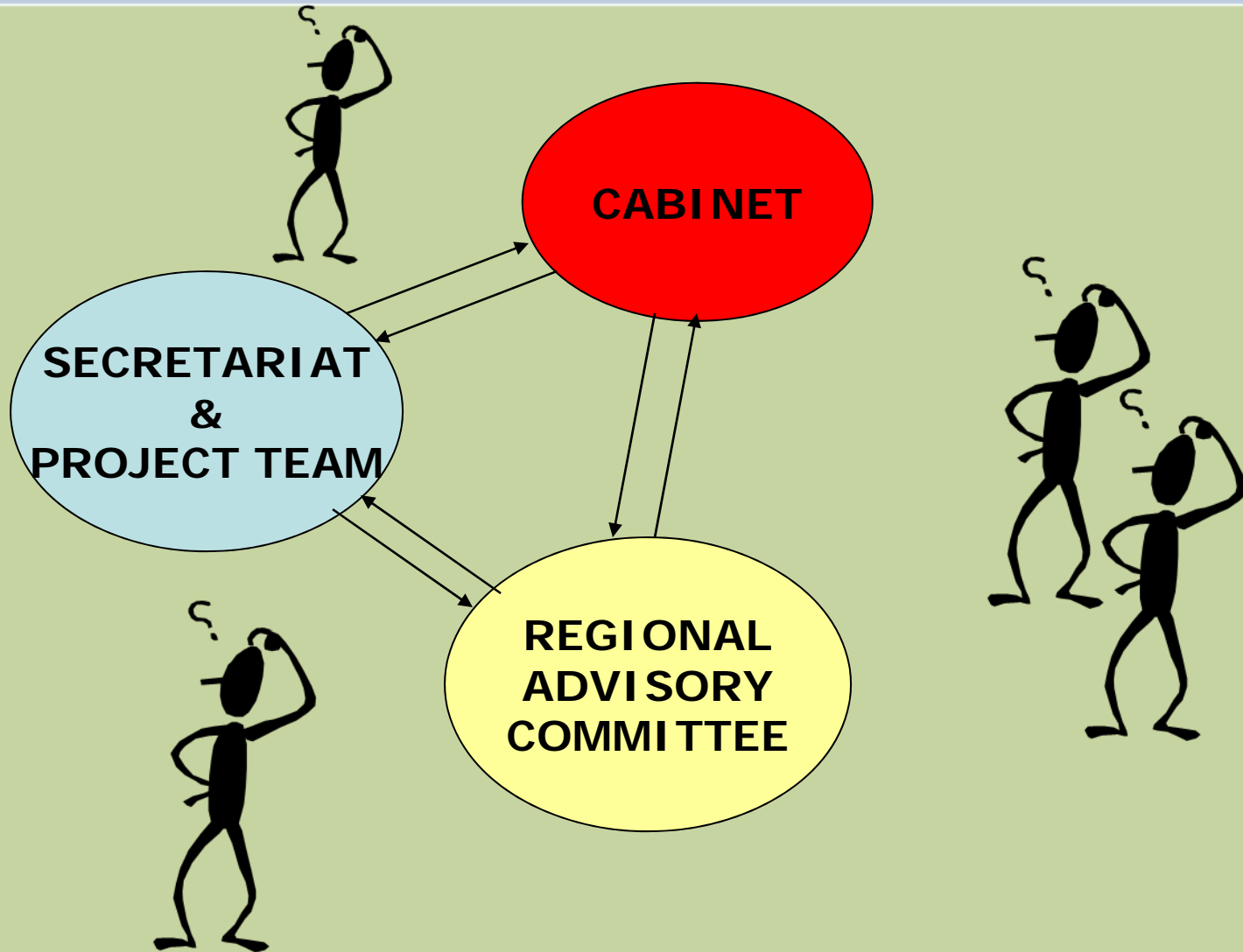
South Saskatchewan

- Primary focus: population growth; water supply & demand
- Landscape conservation (Eastern slopes)
- Economic growth (agriculture; energy; forestry; recreation & tourism)
- Thresholds: surface water quantity & quality; air
- Aboriginal traditional use
- Major multi-use corridors

What's NOT on the RACs' tables

- Municipal governance
- Provincial royalties
- Aboriginal consultation
- Government expenditures
- Population limits
- Existing laws & regulations
- Taxation
- Water allocation (for S. Sask. region)

Where does the public fit??



Concepts to consider...

Discretion...



VS.



Certainty...

Elements for effective participation

- Opportunity to participate
- Process meets broad needs of interested parties
- Provide necessary information
- Open, transparent & publicly accessible process



Questions? Contact us...

Phone: 780-424-5099 or 1-800-661-4238

E-mail: elc@elc.ab.ca or cchiasson@elc.ab.ca

Web: www.elc.ab.ca

Blog: <http://environmentallawcentre.wordpress.com>

Facebook:

<http://www.facebook.com/environmentallawcentre>

Twitter: https://twitter.com/ELC_Alberta

To sign up for e-mail updates, visit:

<http://www.elc.ab.ca/pages/home/Notification.aspx>.